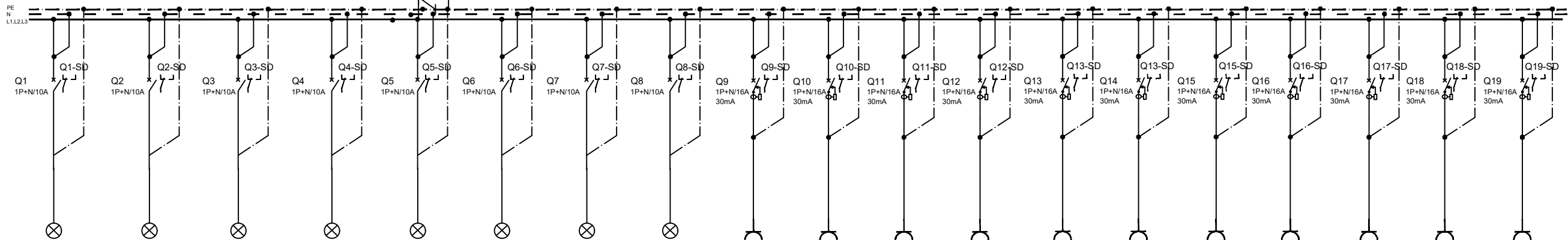


TE-E3.1
IP 55

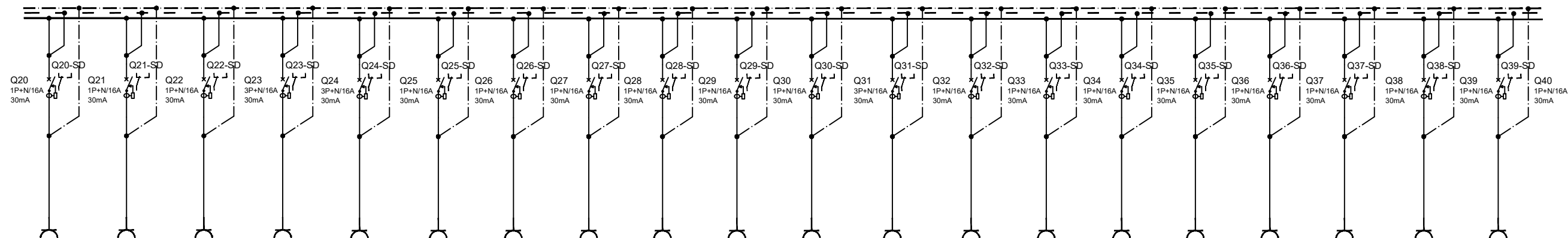
N2XH 5x25 mmp
P
Q0-SB
de la TEG

$P_i = 76,7 \text{ kW}$;
 $P_a = 40,7 \text{ kW}$;
 $I_c = 65,4 \text{ A}$;
 $I_{sc} = 6 \text{ kA}$

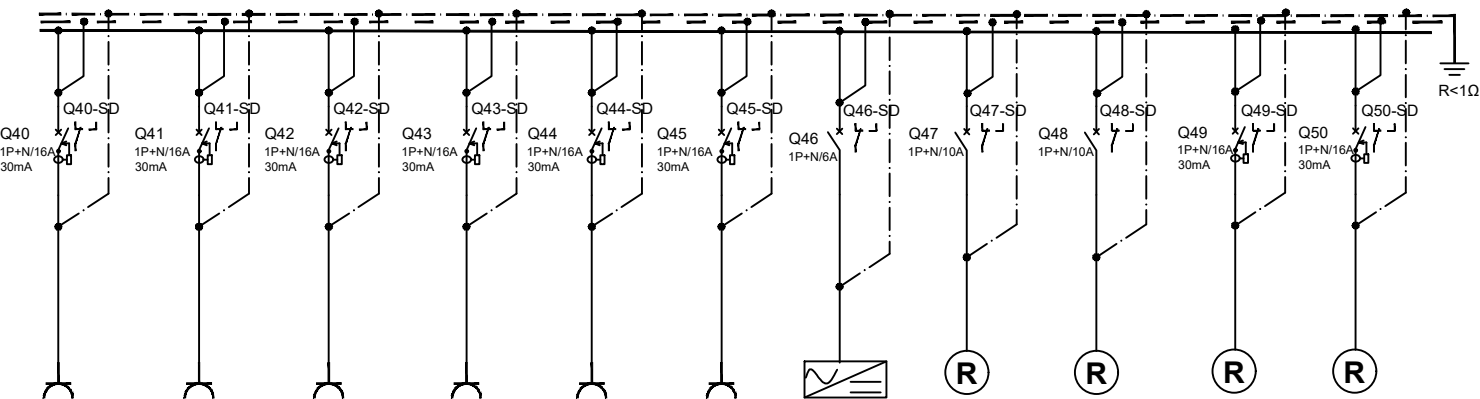
rezerva spatiu 25%



DENUMIRE CIRCUIT	C1	C2	C3	C4	C5	C6	C7	C8	CP1	CP2	CP3	CP4	CP5	CP6	CP7	CP8	CP9	CP10	CP11
PI [kW]	0.756	0.756	0.504	0.567	0.45	0.35	0.702	0.85	2	2	2	2	2	2	2	2	2	2	2
Pa[kW]	0.756	0.756	0.504	0.567	0.45	0.35	0.702	0.85	2	2	2	2	2	2	2	2	2	2	2
Ic [A]	3.65	3.65	2.43	2.74	2.17	1.69	3.39	3.14	9.66	9.66	9.66	9.66	9.66	9.66	9.66	9.66	9.66	9.66	9.66
Sect. CYYF [mm²]	N2XH 3x1,5	N2XH 3x1,5	N2XH 3x1,5	N2XH 3x1,5	N2XH 3x1,5	N2XH 3x1,5	N2XH 3x1,5	N2XH 3x1,5	N2XH 3x2,5	N2XH 3x2,5	N2XH 3x2,5	N2XH 3x2,5	N2XH 3x2,5	N2XH 3x2,5	N2XH 3x2,5	N2XH 3x2,5	N2XH 3x2,5	N2XH 3x2,5	N2XH 3x2,5
PROTECTIE	1P+N10A	1P+N10A	1P+N10A	1P+N10A	1P+N10A	1P+N10A	1P+N10A	1P+N10A	1P+N16A/30mA	1P+N16A/30mA	1P+N16A/30mA	1P+N16A/30mA	1P+N16A/30mA	1P+N16A/30mA	1P+N16A/30mA	1P+N16A/30mA	1P+N16A/30mA	1P+N16A/30mA	1P+N16A/30mA
REPARTITIE FAZA	L1	L2	L3	L1	L2	L3	L1	L2	L2	L3	L1	L2	L3	L1	L2	L3	L1	L2	L3
DESTINATIE	Circ ilum gen saloane	Circ ilum gen saloane	Circ ilum cabinete	Circ ilum gen saloane	Circ ilum hol	Circ ilum gr sanitar saloane	Circ ilum console	Circ ilum console	Circ prize cabinete	Circ prize cabinete	Circ prize cabinete	Circ prize cabinete	Circ prize console	Circ prize salon	Circ prize console	Circ prize salon	Circ prize gr sanitar	Circ prize gr sanitar	Circ prize gr sanitar







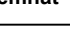


CP12	CP13	CP14	CP15	CP16	CP17	CP18	CP19	CP20	CP21	CP22	CP23	CP24	CP25	CP26	CP27	CP28	CP29	CP30	CP31
2	2	2	2	2	2	2	2	2	2	2	2	2	2	2	2	2	2	2	2
2	2	2	2	2	2	2	2	2	2	2	2	2	2	2	2	2	2	2	2
9.66	9.66	9.66	9.66	9.66	9.66	9.66	9.66	9.66	9.66	9.66	9.66	9.66	9.66	9.66	9.66	9.66	9.66	9.66	9.66
N2XH 3x2,5	N2XH 3x2,5	N2XH 3x2,5	N2XH 3x2,5	N2XH 3x2,5	N2XH 3x2,5	N2XH 3x2,5	N2XH 3x2,5	N2XH 3x2,5	N2XH 3x2,5	N2XH 3x2,5	N2XH 3x2,5	N2XH 3x2,5	N2XH 3x2,5	N2XH 3x2,5	N2XH 3x2,5	N2XH 3x2,5	N2XH 3x2,5	N2XH 3x2,5	N2XH 3x2,5
1P+N/16A/30mA	1P+N/16A/30mA	1P+N/16A/30mA	1P+N/16A/30mA	1P+N/16A/30mA	1P+N/16A/30mA	1P+N/16A/30mA	1P+N/16A/30mA	1P+N/16A/30mA	1P+N/16A/30mA	1P+N/16A/30mA	1P+N/16A/30mA	1P+N/16A/30mA	1P+N/16A/30mA	1P+N/16A/30mA	1P+N/16A/30mA	1P+N/16A/30mA	1P+N/16A/30mA	1P+N/16A/30mA	1P+N/16A/30mA
L1	L2	L3	L1	L2	L3	L1	L2	L3	L1	L2	L3	L1	L2	L3	L1	L2	L3	L1	L2
Circ prize salon	Circ prize console	Circ prize console	Circ prize salon	Circ prize salon	Circ prize console	Circ prize console	Circ prize salon	Circ prize salon	Circ prize console	Circ prize console	Circ prize salon	Circ prize salon	Circ prize console	Circ prize console	Circ prize salon	Circ prize salon	Circ prize console	Circ prize console	Circ prize salon



CP32	CP33	CP34	CP35	CP35	CP38	CC1	R1	R2	R3	R4
2	2	2	2	2	2	0.05				
2	2	2	2	2	2	0.05				
9.66	9.66	9.66	9.66	9.66	9.66	0.24				
N2XH 3x2,5	N2XH 3x2,5	N2XH 3x2,5	N2XH 3x2,5	N2XH 3x2,5	N2XH 3x2,5	NHXH 3x1,5				
1P+N/16A/30mA	1P+N/16A/30mA	1P+N/16A/30mA	1P+N/16A/30mA	1P+N/16A/30mA	1P+N/16A/30mA	1P+N/8A	1P+N/10A	1P+N/10A	1P+N/16A/30mA	1P+N/16A/30mA
L3	L1	L2	L3	L3	L3	L1	L1	L2	L3	L1
Circ prize salon	Circ prize console	Circ prize console	Circ prize salon	Circ prize salon	Circ prize hol	Circ sursa cc	Rezerva	Rezerva	Rezerva	Rezerva

SPECIFICATIE TEHNICA TABLOU ETAJ 3-TR1 - TE-E3.1			
NR CRT	DENUMIREA ECHIPAMENTULUI	FABRICAT	BUG
Q0	Interrupator automat 4P/80A, curba C, I _{cu} = 10kA cu protectie la suprasarcina si scurtcircuit	Eaton sau similar	1
Q1-Q8 Q47-Q48	Interrupator automat 1P+N/10A, curba C, I _{cu} = 10kA cu protectie la suprasarcina si scurtcircuit	Eaton sau similar	10
Q3-Q45 Q49,Q50	Interrupator automat 1P+N/16A + modul protectie diferentiala 30mA, I _{cu} = 10kA curba C, cu protectie la suprasarcina, scurtcircuit si diferentiala	Eaton sau similar	39
Q55	Interrupator automat 1P+N/6A, curba C, I _{cu} = 10kA cu protectie la suprasarcina si scurtcircuit	Eaton sau similar	1
Q0-SD - Q50-SD Q0-SP -	Contact auxiliar semnalizare declansare intrerupator	Eaton sau similar	51
	Contact auxiliar semnalizare pozitie intrerupator		



<div>Proiectant de specialitate:</div> <div><div><div>EDEN[®] DESIGN</div><div>S.C. EDEN DESIGN S.R.L., J03/203/1995, CUT RO7116623 Str. Depozitelor nr.8-10, Municipiul Pitesti, Jud. Arges Tel/fax 0248 610 155; e-mail: office@eden-design.ro; web: www.eden-design.ro;</div></div><div></div></div>				<div>Beneficiar / AUTORITATEA CONTRACTANTA:</div> <div>Spital de Pneumoftiziologie,, Sf. Andrei"-Valea lasului</div> <div>Amplasament: Com. Valea lasului</div>		<div>Nr proiect:</div> <div>2/2022</div>		
Specificatie	Nume	Semnat	Scara:	Titlu proiect:	Faza proiect:			
Proiectat:	ing. Nedelescu Razvan					Data:	Titlu plansa:	Nr.plansa:
Desenat:	ing. Nedelescu Razvan							
Verificat:	ing. Predescu Razvan							
			MAR 2022	SCHEMA ELECTRICA TABLOU ETAJ3-TR1- TE-E3.1	IECT 74			